



GLIDEROL®

Fire-insulated Roller Shutter

GLIDEROL IFS-4G



ARA Manufacture | Metalbilt is the exclusive New Zealand distributor of Gliderol Singapore products.

In a fire situation, a deployed fire shutter can turn red-hot when subjected to the full force of the flames and intense heat can radiate from the shutter curtain. This radiated heat is capable of igniting combustible materials that may be stored on the other side, hence allowing the fire to spread. The solution to this is the use of Fire Insulated Shutters.

Most fire codes permit the use of fire shutters as compartment walls but they need to be insulated.

In premises where highly combustible materials are stored, the fire shutters should also be insulated. The objective is to effectively prevent the spread of fire through radiated heat.

The IFS-4G is our latest 4th generation design. It offers the following features:

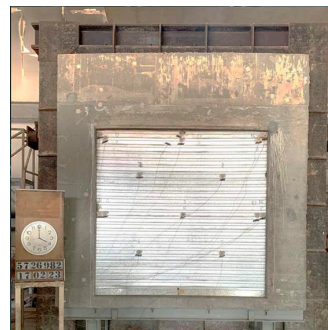
- Single layer steel curtain design, simple and space-saving
- Steel slats on both exposed curtain surfaces provides fire insulation against fire attacks from any direction
- Robust and impact resistant - can function as a security shutter
- Suitable as an external shutter, weather resistant design with PVC bottom weather seal
- Durable – built for daily usage
- Rigid curtain – can accommodate air pressure differentials generated by mechanical vents
- Self-supporting design – steel guide posts transfer most of the shutter weight to the floor
- Can be configured to fully close within 30 sec or 60 sec where required

**Tested to BS EN 1634-1 2014 + A1 2018,
EN 1634-1 2014, SS 489:2015,
MS 1073:1993 and TCVN 9383:2012**

IFS-4G 60 offers 120 minutes of integrity with 60 minutes of fire insulation

IFS-4G 120 offers 120 minutes of integrity with 120 minutes of fire insulation

IFS-4GS 240 offers 240 minutes of integrity with 240 minutes of fire insulation



Non-furnace side - During test



Furnace side - After test

Patent Information

Europe - No. EP22212780.5
Malaysia - No. PI 2022007044

Singapore - No. 10202250456K
Taiwan - No. 111147665

Vietnam - No. 1-2022-08115
Hong Kong - No. 420240928440

Technical Data

DRUM ASSEMBLY

The barrel assembly consists of an extremely rigid steel tube sheathed over a pair of drive shaft assemblies fitted to heavy duty bearing sets and supported at both ends by steel head plates. The drive shaft is a solid polished steel round bar incorporating key ways to accept the drive sprocket. Corresponding to the size of the shutter, the head plates are either 6mm or 8mm thick with shafts of either 38mm or 50mm diameter.

The entire drum assembly is enclosed by a housing consisting of 1.0mm thk galvanized steel sheet cladding secured over an insulation layer of fire boards.

The IFS-4G incorporates a self-supporting structure in the form of a 'goal-post' made up of steel 'C' channels. The entire shutter box and barrel assembly rests on this structure, thereby transferring the bulk of the weight to the floor. The head plate is then anchored to the wall to secure the shutter vertically.

DOOR CURTAIN

The shutter curtain is formed by a single layer of steel interlocking cavity slats spanning the entire width of the door opening.

Door Curtain Material

Slats

Each slat consists of a continuous length of an inner and an outer steel profile. They are connected back-to-back by modular stud brackets without the use of any exposed fasteners. This unique design secures the two profiles together while keeping them thermally separated. The voids between the two profiles are filled with insulation material to form a dense core.

End Clips

Custom-shaped steel end-clips are secured to the ends of the slat to prevent lateral movements

Bottom Rail

The bottom rail is formed by 2 lengths of 50mm x 50mm x 2.0mm thick steel angles secured back-to-back through a medium of fire boards. A PVC weather seal covers over the fire boards and seals against the floor when the shutter is fully closed.

DOOR OPERATION

Motor Drive

The drive unit consists of a suitably-sized linear drive motor operator mounted parallel to and behind the door roll. It has an integrated gearbox and a chain operated sheave wheel for manual operation in case of power failure. The control box is lockable, housing a set of push buttons for 'Up', 'Down' and 'Stop' operations. The door operation shall automatically stop at the desired upper and lower limits via adjustable limit switches.

For safety reasons, the 'DOWN' button shall require the operator to push and hold when closing the shutter. This is to ensure the closing operation is being supervised. Upon sighting an obstruction, the operator will automatically release the push button by reflex. This action will instantly stop the downward travel of the shutter and prevent accidents.

Power supply requirement: 3 Phase 415V x 20amp isolator to be provided for each motor.

Fire Activation Modes

The motor operator has a versatile control adaptability that can enable it to respond to a wide range of activation modes, including Fire Alarm signal, smoke or heat detectors, fusible links etc. In certain situations, a fail-safe operating configuration may be required. This is available as an option.

